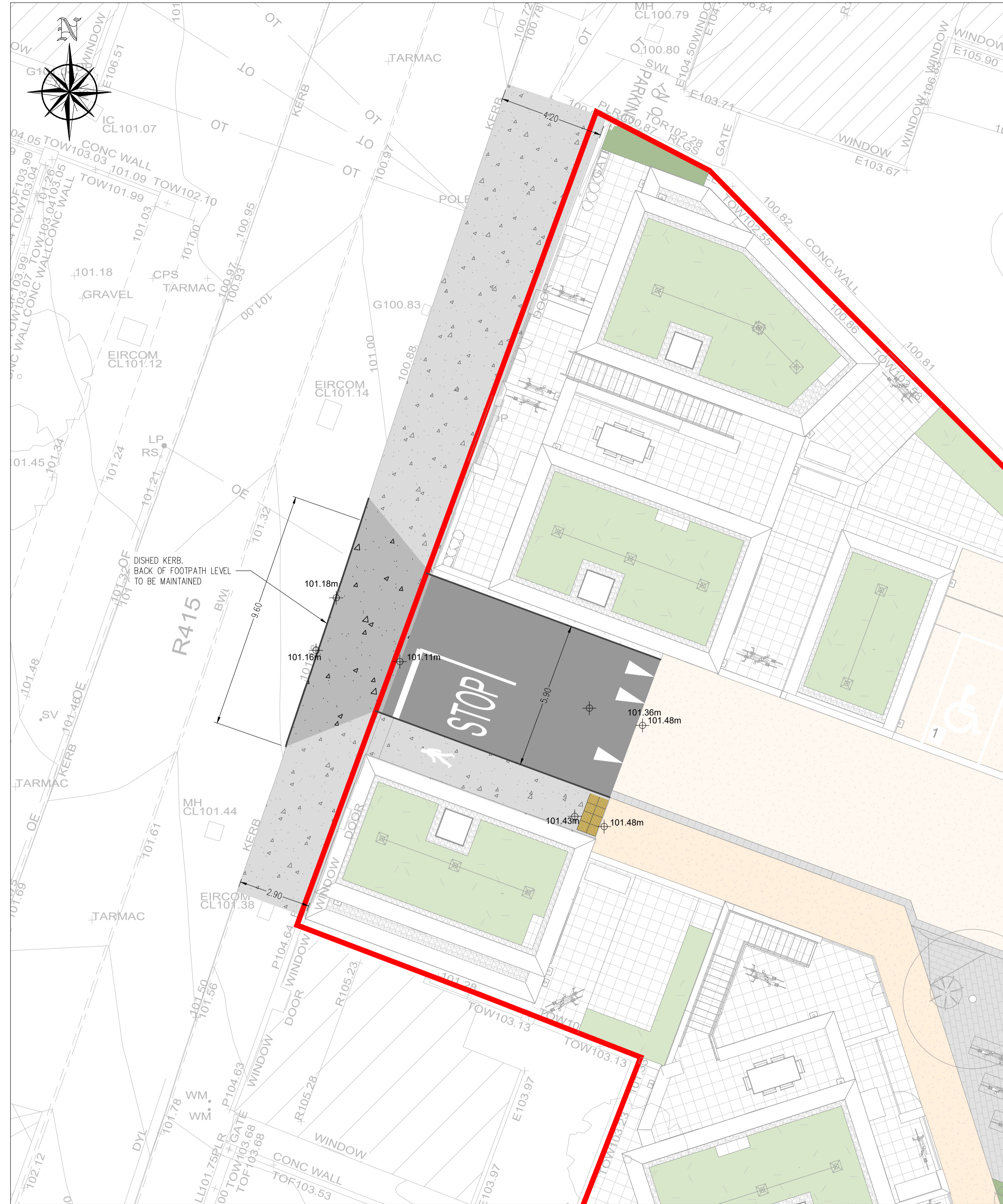
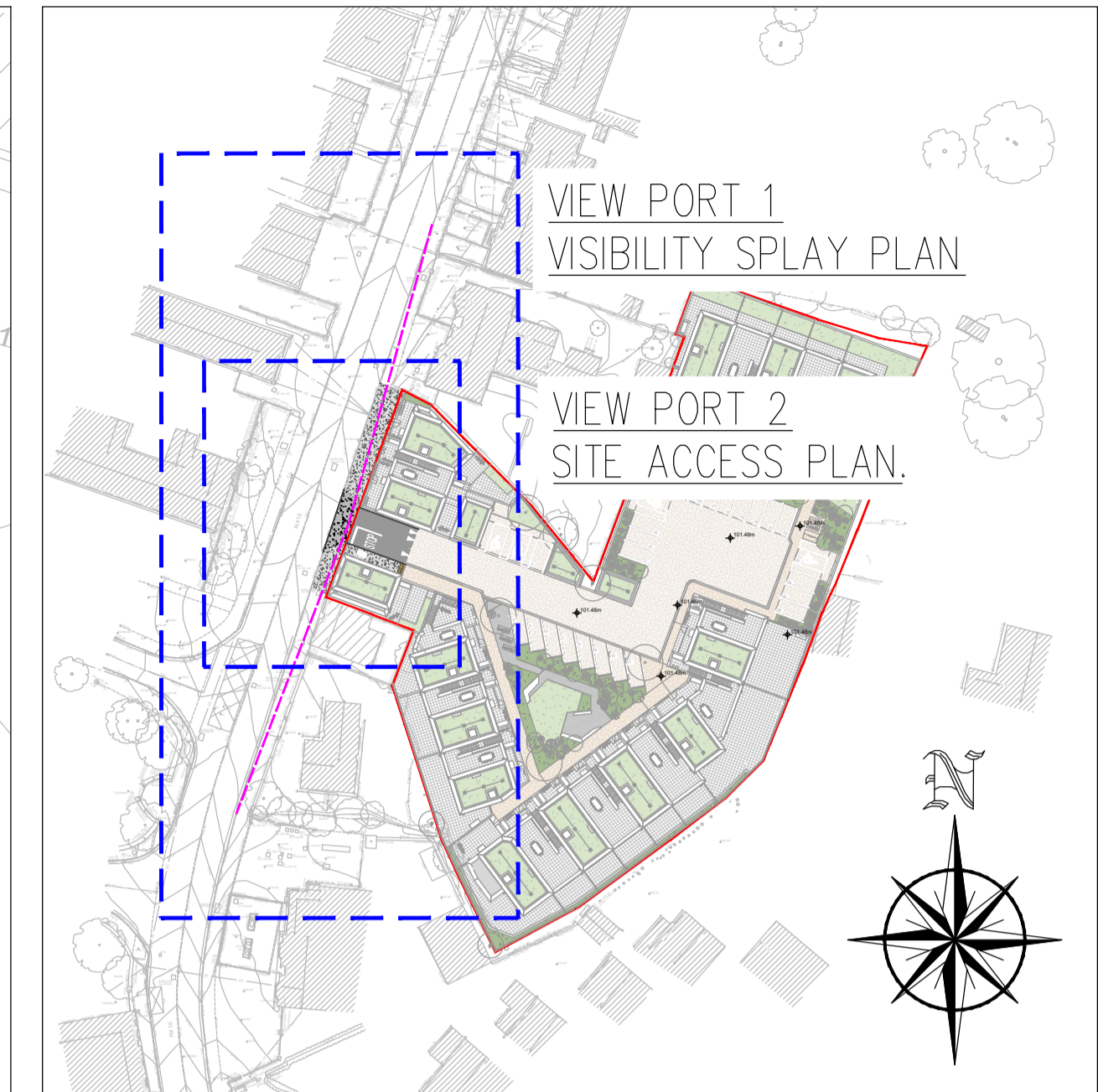


**VISIBILITY SPLAY PLAN.**  
SCALE 1:250



**SITE ACCESS PLAN.**  
SCALE 1:100



**KEY PLAN.**  
SCALE 1:1000

**LEGEND:**

SITE BOUNDARY	
KERB	
DISHED FOOTPATH	
FOOTPATH	
ACCESS CARRIAGEWAY	
COROUROY TACTILE PAVING	
VISIBILITY SPLAY	
RESIN BOUND GRAVEL PERMEABLE SHARED SURFACE - CONTRASTING COLOURS	
FLUSH WIDE TEXTURED KERB PAVING PROVIDING WAYFINDING AND NAVIGATION ASSISTANCE	
TWO TONE NATURAL STONE PAVING IN BESPOKE PAVING PATTERN	
GRASS LAWN, REFER TO LANDSCAPE ARCHITECTS DRAWINGS AND SPECIFICATION	
PROPOSED PLANTING AREAS, REFER TO LANDSCAPE ARCHITECTS DRAWINGS AND SPECIFICATION	

**PLANNING DRAWING.**  
NOT FOR CONSTRUCTION.  
ALL LEVELS GIVEN ARE  
RELATIVE TO ORDNANCE DATUM.  
THIS DRAWING HAS BEEN ISSUED FOR INFORMATION  
PURPOSES ONLY AND MUST NOT BE USED  
FOR CONSTRUCTION UNDER ANY CIRCUMSTANCES

- NOTES**
- For setting out refer to Architect's drawings.
  - This drawing to be read in conjunction with all other Architectural and Engineering drawings and all other relevant drawings and Specifications.
  - DO NOT SCALE THIS DRAWING. Use figured dimensions only.
  - No part of this document may be reproduced or transmitted in any form or stored in any retrieval system of any nature without the written permission as copyright holder except as agreed for use on the project for which the document was originally issued.
  - Ordnance Survey Ireland Licence Number EN 0074025

Rev. No	Date	REVISION NOTE	Dim. By	Chkd. By
P1	2024.09.19	REVISED SITE LAYOUT	AB	GF
P2	2024.10.18	LEVELS AMENDED	AB	GF
P3	2024.12.17	REVISED SITE LAYOUT	AB	GF
P4	2025.01.23	ISSUED FOR PLANNING WITH REVISED SITE LAYOUT	AB	GF

Client	Kildare County Council
Project	An Triantán, Station Road, Kildare Town
Title	Vehicular Access and Sightlines
Dwg. No.	K114-CSC-ZZ-XX-DR-C-0001
Date	Aug' 24
Dim by	AB
Chkd by	GF
Appr'd by	NB
Scale	AS SHOWN@A1
Revision	<b>P4</b>

**CS Consulting Group**  
DUBLIN | LONDON | LIMERICK

Head Office  
19-22 Dame Street, Dublin 2.  
T: +353 (0)1 5480863  
e: info@csconsulting.ie  
w: www.csconsulting.ie

Quality Environment I.S. EN ISO 9001:2008  
NSAI Certified Energy I.S. EN ISO 14001:2004  
Health & Safety OHSAS 18001:2007